

# CONTENTS

2 July 2015 / Vol 523 / Issue No 7558

## THIS WEEK

### EDITORIALS

#### 5 AGRICULTURE

##### Success in failure

Shortfalls of GM wheat should inform, not halt, future crop testing

#### 5 GENETIC MODIFICATION

##### Gene politics

Debate over human-genome editing will move from politicians to society

#### 6 OPTICS

##### Light detective

Smartphone cameras bring spectrometers to public

### WORLD VIEW

#### 7 Practical policies can combat gender inequality

*Douglas Hilton*

To address gender imbalance in research, ask female postdocs what they want

### RESEARCH HIGHLIGHTS

#### 8 SELECTIONS FROM THE SCIENTIFIC LITERATURE

Florida panthers / Sichuan 2013 flood / Adaptable corals / 'Person-not-project' funding / Fish stocks declining / Under two Suns / Dark galaxies / Sticky end for DNA

### SEVEN DAYS

#### 10 THE NEWS IN BRIEF

Lions restored to Rwanda / LIGO detectors triple in sensitivity / Alberta doubles carbon tax

## CAREERS

#### 117 LEISURE ACTIVITIES

##### The power of a pastime

All work and no play suits some, but many researchers thrive on escaping far from the lab or computer screen

#### 119 TRADE TALK

##### Science educator

New York researcher Elizabeth Waters finds it rewarding to share her enthusiasm for science with college students

## NEWS IN FOCUS

#### 13 GENE EDITING

Genetic tweak doubles pig muscle

#### 14 FUNDING

Oregon cancer institute hits deadline for billion-dollar investment

#### 16 BOTANY

North America's herbaria head for endangered status

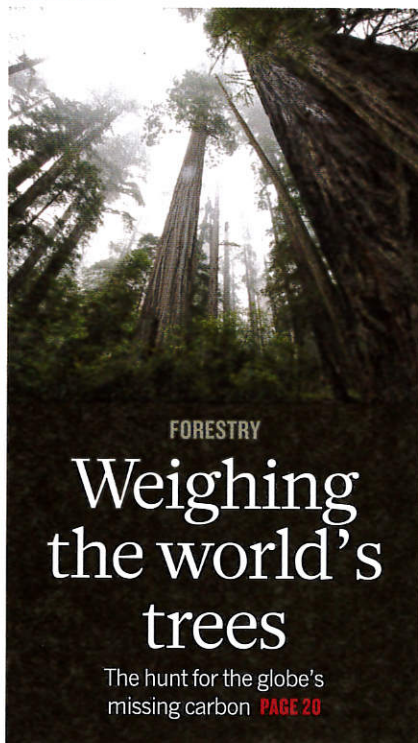
#### 17 MEDICAL RESEARCH

Study puts numbers to radiation safety

#### 18 POLICY

Dutch emissions ruling likely to set trend

### FEATURES



#### 24 MACHINE ETHICS

##### The robot's dilemma

The challenge of building ethics into artificial intelligence

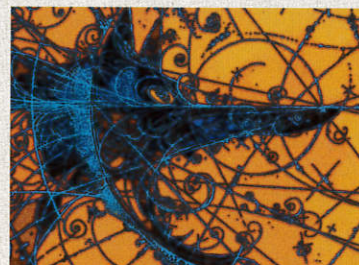
### TOOLBOX

#### 115 TEXT MINING

##### Computers read the fossil record

Palaeontologists could have time for more fossil-hunting if machine algorithms do the spadework on the literature

## COMMENT



### ASTROPHYSICS

## Don't cry wolf

Too many exciting results in cosmology have had to be withdrawn or revised, says Jan Conrad. It is time to reassert the value of review and quality assurance **PAGE 27**

#### 29 POLICY

##### Six research routes to steer transport policy

*Eric Bruun & Moshe Givoni*

Society must balance the costs and benefits of travel

### BOOKS & ARTS

#### 32 ENERGY

##### Profiles of power

*Arnulf Grubler*

#### 33 HUMAN EVOLUTION

##### The cradle of humankind revisited

*Michael Cherry*

#### 34 IMMUNOLOGY

##### Magic bullets to blockbuster

*Marian Turner*



### CORRESPONDENCE

35 eBay beats taxonomy / Learning from the Ebola outbreak / Public opinion on animal testing / Weismann on women

### FUTURES

#### 122 Broken maps of the sea

*Preston Grassmann*

# CONTENTS

2 July 2015 / Vol 523 / Issue No 7558

## RESEARCH

### NEW ONLINE

37 Papers published this week at nature.com

### NEWS & VIEWS

#### 38 PALAEOLOGY

##### *Hallucigenia's* head

A new look at a Cambrian lobopodian reveals mouthparts and teeth  
*Xiaoya Ma* **SEE LETTER P.75**

#### 39 NANOTECHNOLOGY

##### Colourful particles for spectrometry

Coloured quantum dots can be used to record optical spectra  
*Norm C Anheier* **SEE LETTER P.67**

#### 40 PUBLIC HEALTH

##### The case for pay to quit

Reward-based schemes can lead to sustained smoking cessation  
*Theresa M Marteau & Eleni Mantzari*

#### 42 PLANETARY SCIENCE

##### Sink holes and dust jets on comet 67P

Rosetta mission detects streams of dust rising from cometary pits  
*Paul Weissman* **SEE LETTER P.63**

#### 43 EVOLUTION

##### Reptile sex determination goes wild

Temperature-dependent sex reversal in Australian bearded dragons  
*James J Bull* **SEE LETTER P.79**

#### 44 NEUROBIOLOGY

##### Inversion in the worm

Synaptic specificity is regulated through restricted *oig-1* gene expression  
*Vilaiwan M Fernandes & Claude Desplan* **SEE LETTER P.83**

### ARTICLES

#### 47 STRUCTURAL BIOLOGY The architecture of the spliceosomal U4/U6.U5 tri-snRNP

*T H D Nguyen et al.*

#### 53 MOLECULAR BIOLOGY The core spliceosome as target and effector of non-canonical ATM signalling

*M Tresini et al.*

### LETTERS

#### 59 ASTROPHYSICS Self-similar energetics in large clusters of galaxies

*F Miniati & A Beresnyak*

#### 63 PLANETARY SCIENCE Large heterogeneities in comet 67P as



### EVOLUTION

## Feeling the heat

The Australian central bearded dragon (*Pogona vitticeps*) seen basking near the township of Eulo in the semi-arid zone of western Queensland. This lizard has a complex mechanism of sex determination, which includes sex reversal in the wild and rapid transitions from genotypic to environmental sex determination under climatic shifts **PAGES 43 & 79**

revealed by active pits from sinkhole collapse

*J-B Vincent et al.* **SEE N&V P.42**

#### 67 QUANTUM DOTS A colloidal quantum dot spectrometer

*J Bao & M G Bawendi* **SEE N&V P.39**

#### 71 CLIMATE SCIENCES A model-tested North Atlantic Oscillation reconstruction for the past millennium

*P Ortega et al.*

#### 75 EVOLUTION *Hallucigenia's* head and the pharyngeal armature of early ecdysozoans

*M R Smith & J-B Caron* **SEE N&V P.38**

#### 79 EVOLUTION Sex reversal triggers the rapid transition from genetic to temperature-dependent sex

*C E Holleley et al.* **SEE N&V P.43**

#### 83 NEUROSCIENCE Spatiotemporal control of a novel synaptic organizer molecule

*K Howell, J G White & O Hobert*

**SEE N&V P.44**

#### 88 SYSTEMS BIOLOGY Cell-intrinsic adaptation of lipid composition to local crowding drives social behaviour

*M Frechin et al.*

#### 92 CANCER Mechanical induction of the tumourigenic $\beta$ -catenin pathway by tumour growth pressure

*M E Fernández-Sánchez et al.*

#### 96 CANCER MYC regulates the core pre-mRNA splicing machinery as an essential step in lymphomagenesis

*C M Koh et al.*

#### 101 CHEMICAL BIOLOGY Cytosolic extensions directly regulate a rhomboid protease by modulating substrate gating

*R P Baker & S Urban*

#### 106 STRUCTURAL BIOLOGY Structures of actin-like ParM filaments show architecture of plasmid-segregating spindles

*T A M Bharat, G N Murshudov, C Sachse & J Löwe*

#### 111 STRUCTURAL BIOLOGY Structures of human phosphofructokinase-1 and atomic basis of cancer-associated mutations

*B A Webb et al.*

### EVOLUTION

## Head here

New *Hallucigenia sparsa* fossils at last reveal the head of this odd Burgess shale creature in detail. **PAGE 79**

