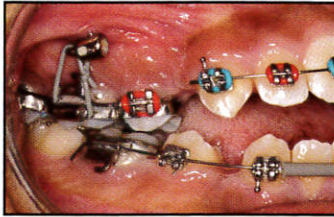
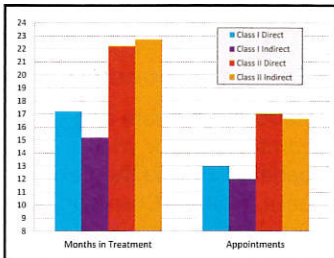


The Cover

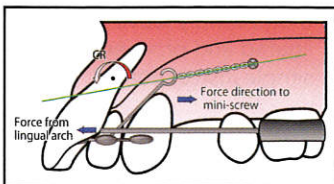
Superimpositions of three-dimensional volumetric images are shown in the article by Dr. Park and colleagues.



35 Anterior Open Bite



49 Clinical Metrics



53 Lingual Retractors

DEPARTMENTS

The Editor's Corner 9
 Book Reviews 28
 Contributors' Guide 62
 Continuing Education 63
 Product News 65
 Classified 66
 Index of Advertisers 67

Treatment of Asymmetrical Class II Malocclusion in Adult Patients

JOOROK PARK, DMD, MSD; ROBERT L. BOYD, DDS, MED; NICHOLAS BAUTER, DDS, MSD; MICHELLE BITTNER EBERLE, DDS, MSD; MEGAN LERAYE LECORNU, DMD, MS; TERRY DISCHINGER, DDS, MSD
 The AdvanSync Class II appliance is demonstrated.

16

OVERVIEW

Extraction Treatment

Part 2 Guidelines for Making the Extraction Decision

DANIEL J. RINCHUSE, DMD, MS, MDS, PHD; LAUREN SIGLER BUSCH, DDS; DANIEL DIBAGNO, DMD; MAURO COZZANI, DMD, MSCD

The authors examine factors that should be considered in determining whether to extract or not to extract teeth.

29

Biomechanical Considerations in the Correction of Anterior Open Bite with Maxillary Skeletal Plates

S. JACK BURROW III, DDS, MS

Plates in the zygomatic buttress are used to anchor posterior intrusion.

35

A Modified Kilroy Spring for Eruption of Palatally Impacted Canines

VIPUL SHARMA, BDS, MDS; AMIT NAGAR, BDS, MDS; PRADEEP TANDON, BDS, MDS

This spring can be applied without removal of the deciduous canine.

46

MANAGEMENT & MARKETING

Analyzing Clinical Metrics of Indirect Bonding and Self-Ligating Brackets

ROBERT S. HAEGER, DDS, MS

Data from seven years of practice are evaluated.

49

CASE REPORT

Modified Lingual Retractors as an Esthetic Treatment Option

KIYOSHI TAI, DDS, PHD
 JAE HYUN PARK, DMD, MSD, MS, PHD

These modified retractors are combined with fixed appliances and miniscrew anchorage.

53

The opinions expressed in the *Journal of Clinical Orthodontics* are those of the writers and do not necessarily reflect the opinions and policies of JCO. Copyright © 2015 JCO, Inc. *Journal of Clinical Orthodontics* (USPS 802-120, ISSN 0022-3875) is published monthly for \$300 per year (U.S. individual rate) by JCO, Inc., 1828 Pearl St., Boulder, CO 80302-5519. Periodicals postage paid at Boulder, CO, and additional mailing office. POSTMASTER: Send address changes to JCO, 1828 Pearl St., Boulder, CO 80302-5519. Phone: (303) 443-1720; e-mail: info@jco-online.com. The material in each issue of JCO is protected by copyright. Instructions and fees for copying articles from JCO are available from the Copyright Clearance Center, (978) 750-8400; www.copyright.com.