

Research

Improving Housing Stability for Mentally Ill Homeless Adults 905

In a randomized trial involving 1198 homeless Canadian adults with mental illness, Stergiopoulos and colleagues found that compared with usual care, subsidized access to scattered-site housing and intensive case management resulted in increased housing stability over 24 months but no improvements in health-related quality of life. In an Editorial, Katz discusses interventions to address chronic homelessness.

📖 Editorial 901

🎥 Author Video Interview jama.com

Sedative Premedication and Patients' Perioperative Experience 916

Sedatives are widely administered before surgery, but evidence to support this practice is lacking. In a randomized placebo-controlled trial that enrolled 1062 adults in France having elective surgery under general anesthesia, Maurice-Szamburski and colleagues found that compared with placebo or no premedication, premedication with lorazepam did not improve patients' reported perioperative experience or satisfaction the day after surgery. Premedication was associated with longer time to extubation and a lower rate of early cognitive recovery.

Prognosis of Untreated Asymptomatic Thyroid Nodules 926

The optimal approach to long-term follow-up of cytologically and sonographically benign thyroid nodules is not clear. In a prospective study involving 992 patients with presumed benign thyroid nodules, Durante and colleagues found that the majority of nodules did not increase in size and thyroid cancer diagnoses were rare during 5 years of follow-up. In an Editorial, Cappola and Mandel discuss implications of the study findings for follow-up of patients with benign thyroid nodules.

📖 Editorial 903

🎧 Author Audio Interview jama.com

Lung Transplant Outcomes With Need-Based Allocation 936

Schaffer and colleagues assessed single- and double-lung transplant outcomes among 7308 patients with idiopathic pulmonary fibrosis (IPF) or chronic obstructive pulmonary disease (COPD) who had undergone transplant since May 2005—when allocation of donor lungs according to medical need was implemented. The authors report that double-lung transplant was associated with less mortality and better graft survival than single-lung transplant among patients with IPF. There was no survival difference between double- and single-lung recipients with COPD.



Humanities

The Art of JAMA

878 *The Sea at Le Havre*, 1868.
Claude Monet (1840-1926).

Poetry and Medicine

973 Malignancy of the Mind

JAMA Revisited

974 "Jumping Frenchmen of Maine"

Opinion

Viewpoint

891 Mandatory Use of Prescription Drug Monitoring Programs
RL Haffajee, AB Jena, and SG Weiner

893 Critical Care Evidence—New Directions
JJ Marini, J-L Vincent, and D Annane

895 Varieties of Standard-of-Care Treatment Randomized Trials: Ethical Implications
SYH Kim and FG Miller

897 Concerns About Using the Patient Safety Indicator-90 Composite in Pay-for-Performance Programs
R Rajaram, C Barnard, and KY Bilimoria

A Piece of My Mind

899 In the Hands of Another
DW Markwalter

Editorial

901 Housing as a Remedy for Chronic Homelessness
MH Katz

903 Improving the Long-term Management of Benign Thyroid Nodules
AR Cappola and SJ Mandel

LETTERS

Research Letter

966 Medicaid Prior Authorization Policies for Pediatric Use of Antipsychotic Medications
I Schmid, M Burcu, and JM Zito

Comment & Response

968 Treatment of Late-Stage Syphilis

970 Fenoldopam and Acute Kidney Injury

971 Multifactorial Risk Assessment for Atherosclerotic Cardiovascular Disease

972 Correction

Editor in Chief
Howard Bauchner, MD

131 YEARS
OF CONTINUOUS
PUBLICATION

Clinical Review & Education

Management of Irritable Bowel Syndrome 949

Based on results of a systematic literature review, Chey and colleagues summarize the evidence relating to the epidemiology, pathophysiology, and diagnosis of irritable bowel syndrome (IBS) and provide guidance for disease management. Diagnosis should rely on symptom-based criteria, exclusion of certain concerning features, and selected diagnostic tests. Treatment should be individualized and may include dietary, lifestyle, medical, and behavioral interventions.

Continuing Medical Education jamanetworkcme.com

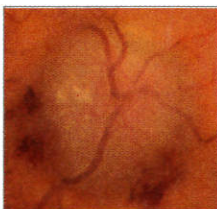
Sugar Consumption and CVD Mortality: An Unresolved Question 959

An article in *JAMA Internal Medicine* reported a dose-dependent relationship between consumption of added sugar—sugars added in food processing or preparation—and cardiovascular disease (CVD) mortality. In this From The JAMA Network article, Dhurandhar and Thomas discuss the evidence relating to health risks of sugar consumption and implications for public health policy.

Medications for Work-Related Sleep Disturbances 961

Shift workers who experience impaired sleep and reduced alertness during night shifts may request pharmacological treatment to ameliorate these adverse effects of their work schedule. This JAMA Clinical Evidence Synopsis by Liira and colleagues summarizes data from a Cochrane review of 15 randomized placebo-controlled trials examining pharmacological interventions for sleepiness and sleep disturbances caused by shift work. Among the findings was that melatonin is associated with a small increase in sleep duration but no change in sleep latency. Modafinil and armodafinil increase alertness and reduce sleepiness but are associated with headache and nausea.

A Patient With Severe Papilledema 963



A 55-year-old man was evaluated in the emergency department for blurry vision of 1 week's duration. Direct ophthalmoscopy revealed severe bilateral optic disc edema, peripapillary hemorrhages, and absent venous pulsations. Bony sclerotic lesions were noted on a computed tomography scan of the head. What would you do next?

Quiz jama.com

Online @ jama.com



Editor's Audio Summary

Howard Bauchner, MD, summarizes and comments on this week's issue.

Author Reading



AUDIO Rebecca L. Haffajee, JD, MPH, reads her Viewpoint "Mandatory Use of Prescription Drug Monitoring Programs."

Author Interview

VIDEO Interview with Vicky Stergiopoulos, MD, author of "Effect of Scattered-Site Housing Using Rent Supplements and Intensive Case Management on Housing Stability Among Homeless Adults With Mental Illness: A Randomized Trial"

AUDIO Interview with Sebastiano Filetti, MD, author of "The Natural History of Benign Thyroid Nodules"



JAMA Patient Page

982 Irritable Bowel Syndrome

NEWS & ANALYSIS

Medical News & Perspectives

881 Clinical Trial Data: Share and Share Alike?

883 Leading by Example—Health Systems Improving the Care of Employees

885 Lab Reports

Cooler Temps Diminish Immune Response Against Rhinovirus in Mice

Soil Screening Research Uncovers Promising New Antibiotic

Oxytocin Restores Sociability in a Mouse Model of Autism

Analysis Provides Map of Protein Expression in Human Tissues

886 News From the CDC

Rebuilding Haiti's Health System

Alcohol Poisoning Deaths Hit Middle-Aged Men Hardest

Departments

875 Staff Listing

965 CME Questions

975 JAMA Network Abstracts

977 Classified Advertising

979 Journal Advertiser Index

981 Contact Information

Instructions for Authors

jama.com/public/instructionsforauthors.aspx