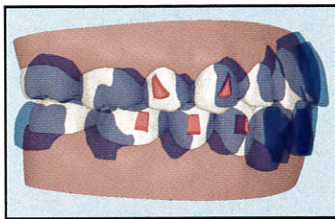
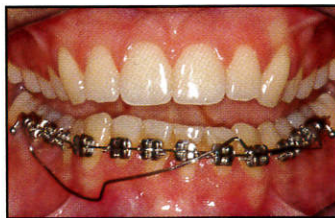


The Cover

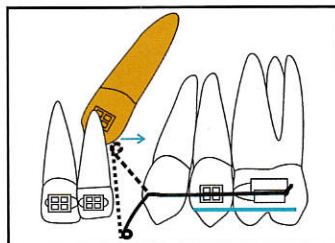
PolyJet photopolymerization is one of the three-dimensional printing technologies covered in the Overview by Drs. Groth, Kravitz, Jones, Graham, and Redmond.



487 Extraction Treatment



500 Canted Incisal Plane



513 Modified K-9 Spring

DEPARTMENTS

The Editor's Corner ... 461
 Book Reviews ... 474
 Contributors' Guide ... 486
 Continuing Education ... 515
 Product News ... 517
 Classified ... 518
 Index of Advertisers ... 519

THE HOT SEAT

Cone-Beam Computed Tomography

JOHN W. GRAHAM, DDS, MD

Ten clinicians compare notes on CBCT usage.

470

OVERVIEW

Three-Dimensional Printing Technology

CHRISTIAN GROTH, DDS, MS; NEAL D. KRAVITZ, DMD, MS; PERRY E. JONES, DDS, MAGD; JOHN W. GRAHAM, DDS, MD; W. RONALD REDMOND, DDS, MS

Orthodontic applications of 3D printers are described.

475

CASE REPORT

Accelerated Extraction Treatment with Invisalign

KENJI OJIMA, DDS; CHISATO DAN, DDS; RIKI NISHIYAMA, DDS; SUMIMASA OHTSUKA, DDS, PHD; WERNER SCHUPP, DDS

Microvibration therapy shortens the interval between aligner changes.

487

A New Auxiliary Spring for Correction of a Canted Incisal Plane

MARINO MUSILLI, DDS; FRANCESCO GRAMPONE, DDS; BIRTE MELSEN, DDS, DO

A canting spring combines with a continuous archwire.

500

CASE REPORT

Treatment of Bimaxillary Protrusion with Lever-Arm Mechanics and Micro-Implant Anchorage

RYOON-KI HONG, DDS, PHD; SEUNG-MIN LIM, DDS; JUNG-MIN HEO, DDS; JANG-HOON AHN, DDS, MSD, PHD

The authors present an alternative for a patient with normal upper-incisor inclination and a gummy smile.

505

TECHNIQUE CLINIC

A Modified K-9 Spring for Palatally Impacted Canines

DIPTI SHASTRI, BDS, MDS; PRADEEP TANDON, BDS, MDS; GYAN P. SINGH, BDS, MDS; ALKA SINGH, BDS, MDS

This de-impaction spring can be placed during the alignment phase.

513

The opinions expressed in the *Journal of Clinical Orthodontics* are those of the writers and do not necessarily reflect the opinions and policies of JCO. Copyright © 2014 JCO, Inc. *Journal of Clinical Orthodontics* (USPS 802-120, ISSN 0022-3875) is published monthly for \$300 per year (U.S. individual rate) by JCO, Inc., 1828 Pearl St., Boulder, CO 80302-5519. Periodicals postage paid at Boulder, CO, and additional mailing office. POSTMASTER: Send address changes to JCO, 1828 Pearl St., Boulder, CO 80302-5519. Phone: (303) 443-1720; e-mail: info@jco-online.com. The material in each issue of JCO is protected by copyright. Instructions and fees for copying articles from JCO are available from the Copyright Clearance Center, (978) 750-8400; www.copyright.com.