

THIS WEEK

Articles in this print journal have already been published on thebmj.com and may have been shortened. Full versions with references are on thebmj.com



p15

NEWS & VIEWS

- 1 News and research news
- 6 **BMJ Confidential:** Abdul Ghafur

ANALYSIS

- 15 Has WHO set a smart goal for physical activity? Philippe de Souto Barreto

FEATURES

- 18 Where now for the private sector? Matthew Limb
- 20 **COVER** Can private providers be trusted to run NHS hospitals? Stephen Collier and Gabriel Scally

VIEWS

- 22 Letters
- 24 Personal View
- 25 Margaret McCartney: If I ruled the NHS
- 26 Obituaries: Ronald Grainger



p7

EDITORIALS

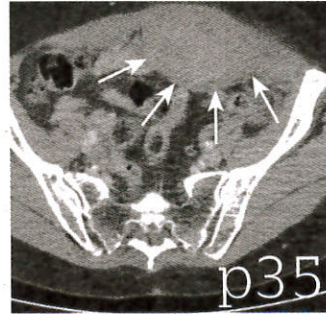
- 7 Pressures on emergency departments: Need to be tackled through integrated urgent and emergency care: Chris Ham
- 8 Which oral hypoglycaemic for gestational diabetes? Latest evidence favours metformin over glibenclamide, but there's more work to do on both agents: David A Sacks
● RESEARCH, p 14
- 9 **COVER** A single blood test to rule out myocardial infarction? High sensitivity troponin assays could get us there, if combined with clinical judgment: Adam Timmis
● RESEARCH, pp 12, 13
- 10 Firm action needed on predatory journals: They're harming researchers in low and middle income countries most, but everyone must fight back: Jocalyn Clark and Richard Smith



p13

RESEARCH

- 11 Impact of a behavioural sleep intervention on symptoms and sleep in children with attention deficit hyperactivity disorder, and parental mental health: Harriet Hiscock et al
- 12 High sensitivity cardiac troponin and the under-diagnosis of myocardial infarction in women: Anoop SV Shah et al
● EDITORIAL, p 9
● RESEARCH, p 13
- 13 Diagnostic accuracy of single baseline measurement of Elecsys Troponin T high-sensitive assay for diagnosis of acute myocardial infarction in emergency department: Zhivko Zhelev et al
● EDITORIAL, p 9
● RESEARCH, p 12
- 14 **COVER** Glibenclamide, metformin, and insulin for the treatment of gestational diabetes: Montserrat Balsells et al
● EDITORIAL, p 8



p35

EDUCATION

CLINICAL REVIEW

- 27 Managing patients with multimorbidity in primary care: Emma Wallace et al
● thebmj.com 1CPD/CME hour

PRACTICE

- COVER** WHAT YOUR PATIENT IS THINKING
- 31 Why there's no point telling me to lose weight: Emma Lewis
● thebmj.com 0.5 CPD/CME hour
 - 32 **COVER** Is it a stroke?: Graeme J Hankey and David J Blacker
● thebmj.com 0.5 CPD/CME hour

PRACTICE POINTER

- 35 Endgames
- 36 Minerva

BMJ CAREERS

Less than full time training: examining the impact
A turning point for medical regulation
BMA guidance warns GPs to cut back on extra work
Followed by jobs and courses



● PRACTICE, P.31

The BMA grants editorial freedom to the Editor of *The BMJ*. The views expressed in the journal are those of the authors and may not necessarily comply with BMA policy. *The BMJ* follows guidelines on editorial independence produced by the World Association of Medical Editors (www.wame.org/wamestmt.htm#independence) and the code on good publication practice produced by the Committee on Publication Ethics (www.publicationethics.org.uk/guidelines/). *The BMJ* is intended for medical professionals and is provided without warranty, express or implied. Statements in the journal are the responsibility of their authors and advertisers and not authors' institutions, the BMJ Publishing Group, or the BMA unless otherwise specified or determined by law. Acceptance of advertising does not imply endorsement. To the fullest extent permitted by law, the BMJ Publishing Group shall not

be liable for any loss, injury, or damage resulting from the use of *The BMJ* or any information in it whether based on contract, tort, or otherwise. Readers are advised to verify any information they choose to rely on.

©BMJ Publishing Group Ltd 2014 All Rights Reserved. No part of this publication may be reproduced, stored in a retrieval system, or transmitted in any form or by any other means, electronic, mechanical, photocopying, recording, or otherwise, without prior permission, in writing, of *The BMJ*.

Published weekly. US periodicals class postage paid at Rahway, NJ. Postmaster: send address changes to *BMJ*, c/o Mercury Airfreight International Ltd Inc, 365 Blair Road, Avenel, NJ 07001, USA. \$796. Weekly. Printed by Polestar Limited

