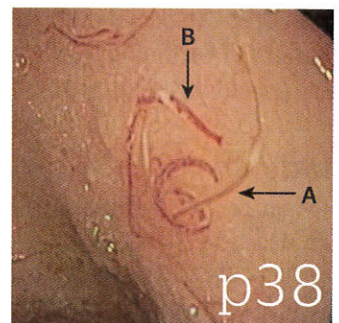
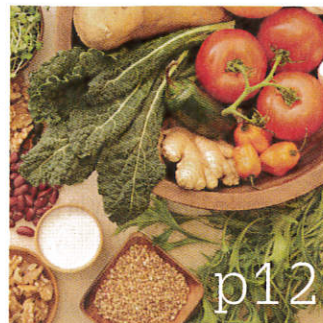


THIS WEEK

Articles appearing in this print journal have already been published on thebmj.com, and the print version may have been shortened



NEWS

- 1 Midwife led delivery is safer than a labour ward for low risk pregnancies, says latest NICE guidance
Doctors' leaders applaud NHS cash injection
 - 2 EMA is accused of weakening its conflict of interest policy
Australia's proposal for a copayment to see a GP is set to fail amid confusion
 - 3 Stroke care audit shows major staff shortages
Diabetes in midlife increases cognitive decline 20 years later
 - 4 Many oesophageal and gastric cancers are detected too late
RCP holds firm on opposition to assisted dying
Variations in lung cancer care continue to affect survival and quality of life
 - 5 Action against surgeon is suspended after MDU withdraws funding
Council leaders almost walked away from Better Care Fund deal
- BMJ CONFIDENTIAL**
- 6 Sam Everington
Optimistic, extrovert, driven

EDITORIALS

- 7 Reforming the Cancer Drugs Fund
Focus on drugs that might be shown to be cost effective
Martin Buxton et al
- 8 Mediterranean diet and telomere length
Genetic factors may contribute to the link between Mediterranean diet and longer telomeres
Peter M Nilsson
● RESEARCH, p 12
- 9 Delirium on the intensive care unit
Deadly or not, delirium remains a serious threat to patients worldwide
Valerie J Page and Tobias Kurth
● RESEARCH, p 11
- 10 Medical journals and industry ties
Zero tolerance on education articles with financial links to industry
Mabel Chew et al

RESEARCH

- 11 The attributable mortality of delirium in critically ill patients: prospective cohort study
Peter M C Klein Klouwenberg et al
● EDITORIAL, p 9
- 12 Mediterranean diet and telomere length in Nurses' Health Study: population based cohort study
Marta Crous-Bou et al
● EDITORIAL, p 8
- 13 Angiotensin receptor blocker in patients with ST segment elevation myocardial infarction with preserved left ventricular systolic function: prospective cohort study
Jeong Hoon Yang et al

EDUCATION

STATE OF THE ART REVIEW

- 26 Urinary incontinence in women
Lauren N Wood and Jennifer T Anger

PRACTICE

EASILY MISSED?

- 31 Lung cancer
Richard D Neal et al

GUIDELINES

- 33 Diagnosis and management of community and hospital acquired pneumonia in adults: summary of NICE guidance
Sinan Eccles et al

ENDGAMES

- 36 Quiz page for doctors in training

MINERVA

- 38 Exercise induced dyspnoea, and other stories



Anatomy of a CQC inspection
● FEATURE, p 14

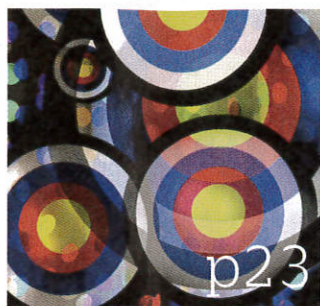
The BMA grants editorial freedom to the Editor of *The BMJ*. The views expressed in the journal are those of the authors and may not necessarily comply with BMA policy. *The BMJ* follows guidelines on editorial independence produced by the World Association of Medical Editors (www.wame.org/wamestmt.htm#independence) and the code on good publication practice produced by the Committee on Publication Ethics (www.publicationethics.org.uk/guidelines/). *The BMJ* is intended for medical professionals and is provided without warranty, express or implied. Statements in the journal are the responsibility of their authors and advertisers and not authors' institutions, the BMJ Publishing Group, or the BMA unless otherwise specified or determined by law. Acceptance of advertising does not imply endorsement

To the fullest extent permitted by law, the BMJ Publishing Group shall not be liable for any loss, injury, or damage resulting from the use of *The BMJ* or any information in it whether based on contract, tort, or otherwise. Readers are advised to verify any information they choose to rely on.
©BMJ Publishing Group Ltd 2014 All Rights Reserved. No part of this publication may be reproduced, stored in a retrieval system, or transmitted in any form or by any other means, electronic, mechanical, photocopying, recording, or otherwise, without prior permission, in writing, of *The BMJ*.
Published weekly. US periodicals class postage paid at Rahway, NJ. Postmaster: send address changes to *BMJ*, c/o Mercury Airfreight International Ltd Inc, 365 Blair Road, Avenel, NJ 07001, USA. \$796. Weekly. Printed by Polestar Limited





p17



p23



p24

BMJ CAREERS

- ▶ News: Communication and MRCGP pass rates
- ▶ Over-regulation and trust in doctors
- ▶ Interview with Wendy Reid
- ▶ How pharmacists could help the NHS deal with its GP shortage



Followed by jobs and courses

VIEWS

FEATURES

- 14 Anatomy of a Care Quality Commission inspection
Gareth Iacobucci finds out what a hospital inspection is like
- 17 *The BMJ* Christmas appeal 2014
Médecins Sans Frontières is bringing doctors to west Africa to help with the Ebola outbreak, writes Fiona Godlee, which is why we've chosen it for *The BMJ's* Christmas appeal this year

LETTERS

- 18 Milk and mortality
- 20 Cervical pre-cancer; Testosterone replacement
- 21 Arteriovenous fistulas

OBSERVATIONS

ETHICS MAN

- 22 Don't forget the relatives
Daniel K Sokol

PERSONAL VIEW

- 23 Target diagnosis rates are misleading and unethical
Martin Brunet

OBITUARIES

- 24 Gerald "Charlie" Westbury
Developed new reconstructive procedures in cancer surgery
- 25 Mary Kelland Armstrong (Bruford); William Alan Harries; David Nichol Sharp Kerr; John Hardy Price; Tom Rosser; Peter Wallis

LAST WORDS

- 37 Does the GMC deserve its current powers?
Margaret McCartney
Menus needed at the EMA's restaurant
Tom Jefferson and Peter Doshi

Help them leave their cow's milk allergy symptoms behind

Nutramigen LIPIL is the only specialised infant feed with published clinical evidence of reaching oral tolerance to cow's milk

- Short term symptom relief¹ and tolerance to cow's milk²
- Tolerance supports improved quality of life for both mother and child³
- Tolerance can avoid unnecessary healthcare costs by reducing treatment time⁴

LIPIL*

First for cow's milk allergy

Nutramigen – new research, setting new standards for the management of CMA

References: 1. Dupont C et al. *Br J Nutr* 2011;114:1-4. 2. Canani R et al. *J Allergy Clin Immunol* 2012; 129:580-582. 3. Lothe L, Lindberg T. *Pediatrics* 1989; 83:262-266. 4. Koletzka S et al. *J Pediatr Gastroenterol Nutr* 2012; 55(2):221-229. **IMPORTANT NOTICE:** Breastfeeding is best for babies. Parents should always be advised by an independent healthcare professional regarding infant feeding. Products of Mead Johnson must be used under medical supervision. EU 11.564. *Trademark of Mead Johnson & Company, LLC. © 2013 Mead Johnson and Company, LLC.