

台灣醫學圖書館學會暨醫圖工作人員研討會

EBM和SDM的距離 服教研的全面啟動

吳承誌 臨床藥師

長庚醫療財團法人高雄長庚紀念醫院 藥劑部臨床藥學科

教學部實證醫學中心副主任

管理部品質管理中心SDM推動組 / Choosing wisely推動組

台灣實證醫學學會理事 / 實證健康照護教師

2020/9/18

- Pitfalls on traditional EBM
- Recommended scenario for SDM application / clinical impact
- Model of SDM
 - SHARE approach
 - Decision map
 - Clinical pathway construction
- PDA construction
- CGMH experience

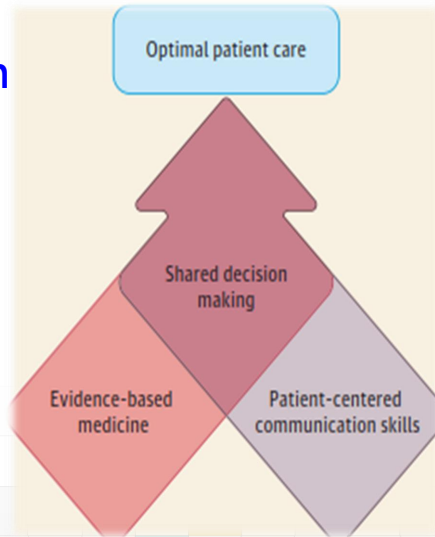
Pitfall on traditional EBM

3

Recommended scenario for SDM application

4

- Evidence-based medicine should begin and end with the patient
 - Searching, appraising, integrating → endless cycle (5A)
- Patients' values and preferences ? (Apply)
 - Lack of research
 - Different populations



JAMA 312(13); 2014: 1295-6

- Medical uncertainty
- Lack of solid evidence-based solution for specific diseases or conditions
- Dead or high risk diseases
- Significant function, image change or complication
- Long-term medication use

SDM = patient education ?

- Comparison between patient education & decision support

Approach	Patient education	Decision support
Options & outcomes	-	+
Info about clinical problems	+	+
Outcome probability	-	+/-
Experience of others	+/-	+/-
Explicit value clarification	-	+

RNAO Best Practice Guideline: Decision Support for CKD, 2009

Clinical impact of SDM

- Intervention for promoting SDM in daily practice

Aspect of SDM targeted

Clarify patient values (89%)	Define and explain the healthcare problem (72%)
Present options (65%)	Present what is known and make recommendations (58%)
Discuss pros and cons of each option (53%)	Check and clarify the patient's understanding (51%)

Patient Education and Counseling 102 (2019) 1057-66

Clinical impact of SDM

- Intervention for promoting SDM in daily practice

Type of intervention

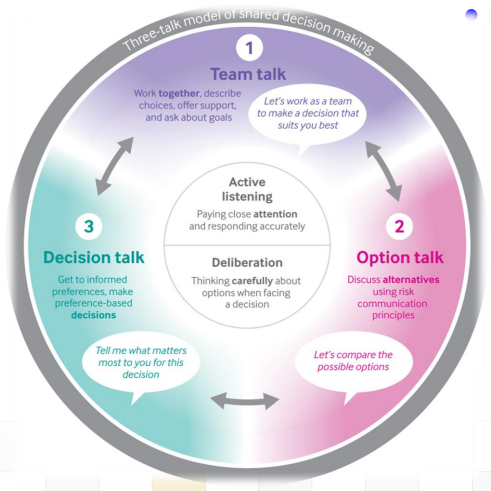
- Educational meeting
- Educational outreach visit
- Educational materials
- Multiple (46%)

Components of intervention

- Decision support tool (57%)
- Role-playing
- Video-modeling
- Group discussions & plenary feedback

Patient Education and Counseling 102 (2019) 1057-66

Model of SDM



- Three-mode talk

- Team talk
 - Indicate choice
 - Provide support
- Option talk
 - Identify goals and explore patients' overall goals
 - Risk communication
- Decision talk
 - Informed preference

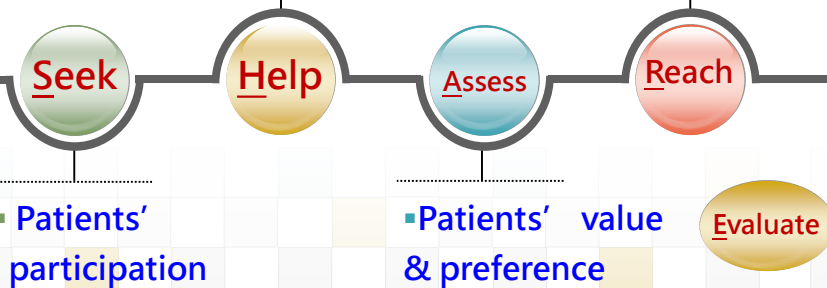
BMJ 2017;359:j4891

SHARE concepts

The SHARE Approach

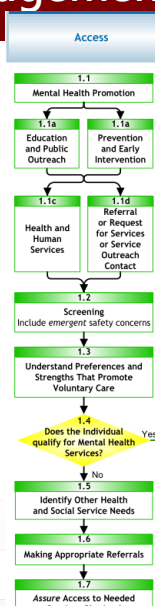
Explore & compare treatment options

Decision with patient



AHRQ: Agency for Healthcare Research and Quality

Decision map – Access & engagement



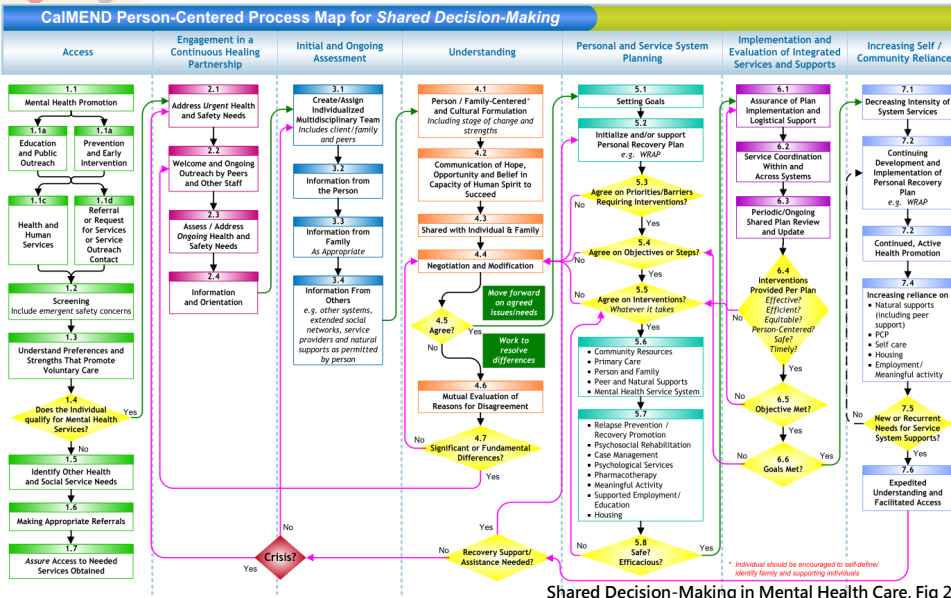
Who Can Be on a Shared Decision-Making Health Care Team?

Many types of health care professionals can be part of Shared Decision-Making, including:

- | | | |
|---------|-------------------|----------------------|
| Doctors | Care Coordinators | Pharmacists |
| Nurses | Health Coaches | Patient Advocates |
| APRNs | Navigators | Physician Assistants |

Shared Decision-Making in Mental Health Care, Fig 2.; Minnesota Shared Decision-Making Collaborative

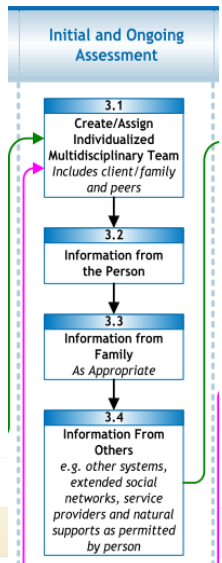
Seek – decision map



Shared Decision-Making in Mental Health Care, Fig 2.

Decision map initial assessment

- Needs or preference survey
 - Paper review
 - Experience from patient, family, care giver
 - Clinical consideration & feedback
 - Inter-professional opinion
 - Select the frequently asked question from patients



Shared Decision-Making in Mental Health Care, Fig 2.; Minnesota Shared Decision-Making Collaborative

Decision map – understanding

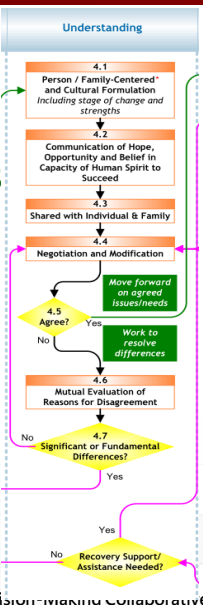
- Design and Pilot Shared Decision-Making Process
 - PDA production (based on questions from previous steps)

Patient / scenario	Introduction
Therapeutic options comparison	Final preference/choices/decision

– 5W1H

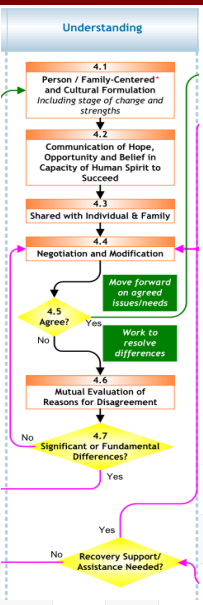
What	Why
Who	Where
When	How

Shared Decision-Making in Mental Health Care, Fig 2.; Minnesota Shared Decision-making Collaborative



Decision map – understanding

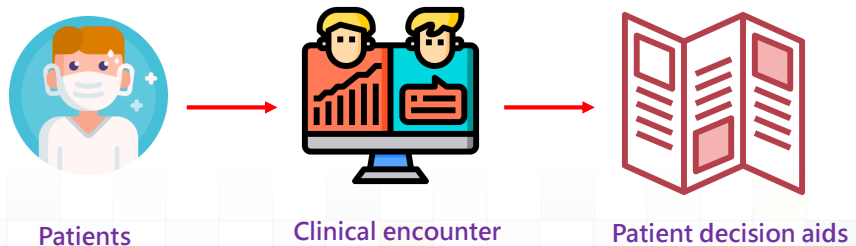
- Design and Pilot Shared Decision-Making Process
 - Workflow design
 - Embedding 、 tracking 、 communicating 、 process improvement
 - PDA application
 - Accountability loop
 - Educational support
 - Outreach visit



<https://decisionaid.ohri.ca/ODST>, Ottawa Decision Support Tutorial

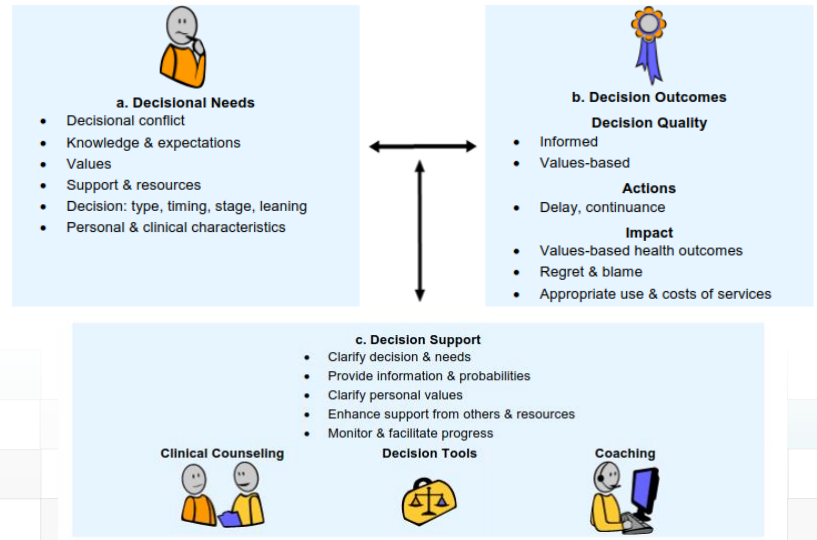
Clinical pathway construction

- Patient flow focus - based on specialty
 - Decision point
 - Clinical scenario



Help - Construction of decision aids

- Ottawa Decision Support Framework



Production of PtDAs

17

Foreign experience

18

• Composition

Team talk¹ Option talk¹ Decision talk¹

Patient Decision Aids (PtDAs)

The SHARE Approach

尋求病患參與² 協助病患發掘與比較治療選項² 評估病人喜好² 完成決定² 評估²

釐清病人的決策³ 探索病人決策 (知識、價值、確定性)³ 確認決策需求³ 決策支援 & 評估³

Ottawa Personal Decision Guide
For People Making Health or Social Decisions

1. J Gen Intern Med 27(10):1361-7; 2. SHARE (AHRQ); 3. Ottawa Personal Decision Guides

• Choice medication use for diabetes mellitus

– Final edition : full set of PtDAs

CGMH experience

19

Implementation of decision aids into health care system

27

• Team assembling

– Center of quality management, SDM promotion team

• Framework proposal

決策題目	前言
適用對象 / 適用狀況	疾病或健康議題簡介
醫療選項簡介	您目前比較想要選擇的方式是

* Available decision aids
* Self-developed- Ottawa Personal Decision Guide

* Patient view
* Health professional view
* Health services view

Decision aids

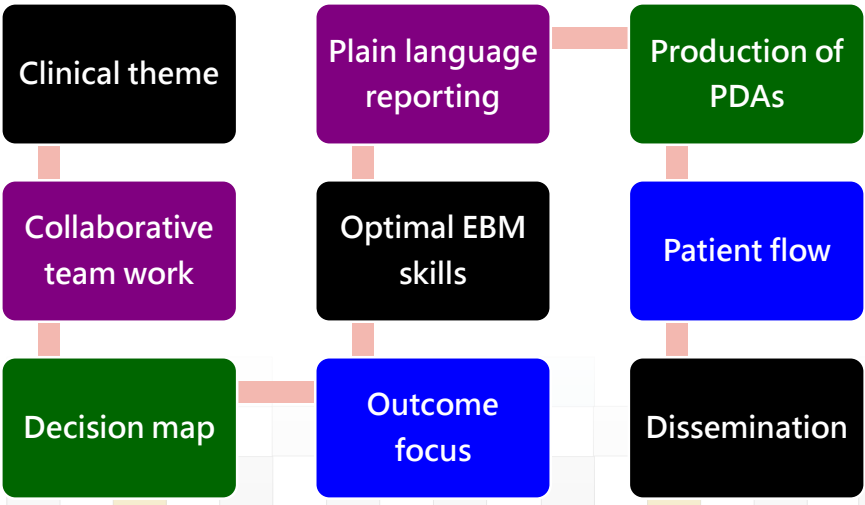
Identify the question Find patient decision aids (Pamphlet or video) Identify the barriers & overcome

Monitor use & outcomes Provide training Implement decision aids & support

* Highlight the gap
* Increase awareness
* Concise summary report

* SURE test
* Decision Regret Scale

* Ottawa Decision Support Tutorial
* Video examples
* Inter-professional SDM



Thanks for your attention Roadmap from EBM to SDM

