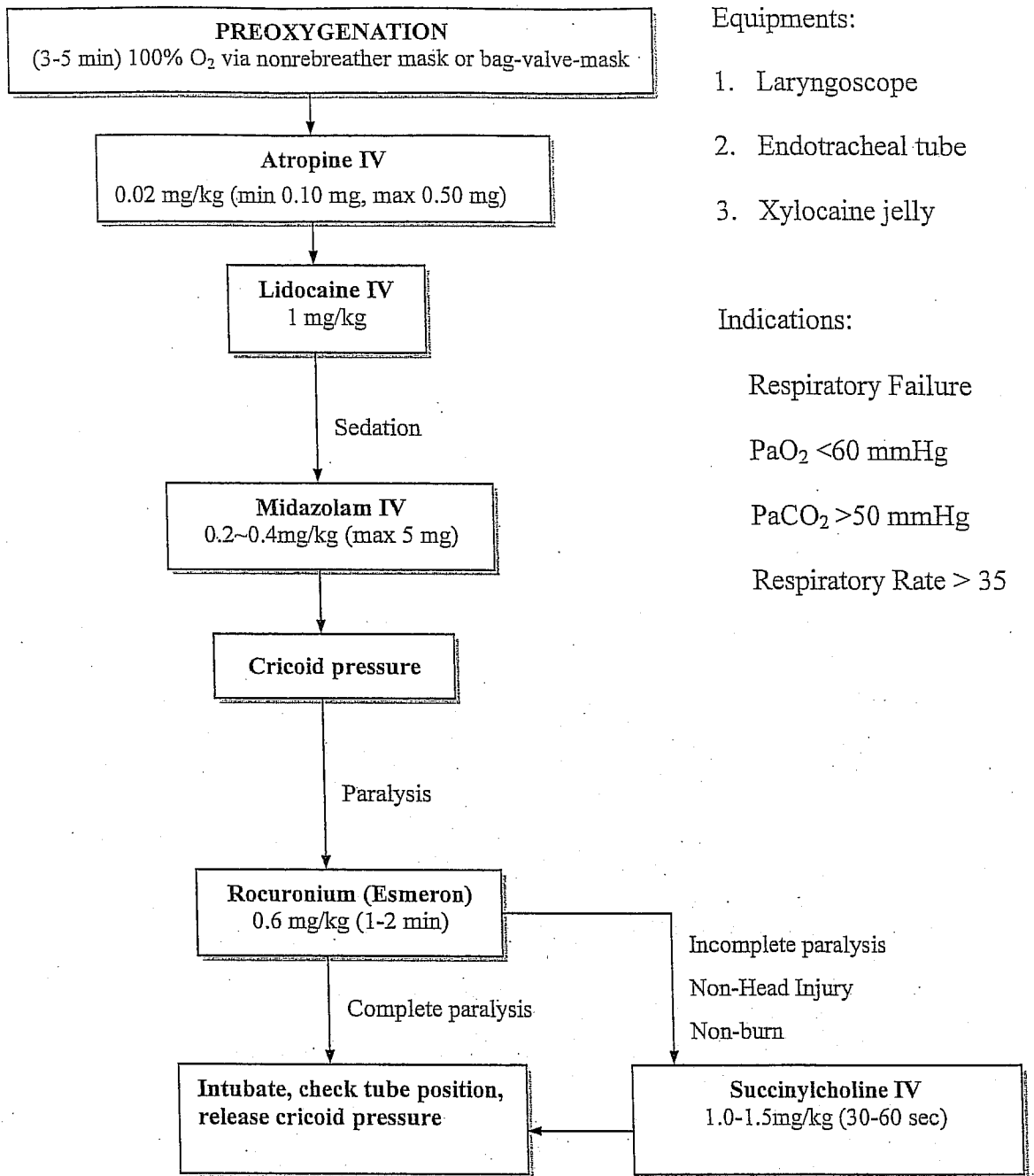


Rapid – Sequence Intubation

2. Adult Endotracheal Intubation (>14y/o)



Equipments:

1. Laryngoscope
2. Endotracheal tube
3. Xylocaine jelly

Indications:

Respiratory Failure

PaO₂ <60 mmHg

PaCO₂ >50 mmHg

Respiratory Rate > 35

* Intubation depth (cm):

orotracheal intubation: 19-22

nasotracheal intubation: 23-26