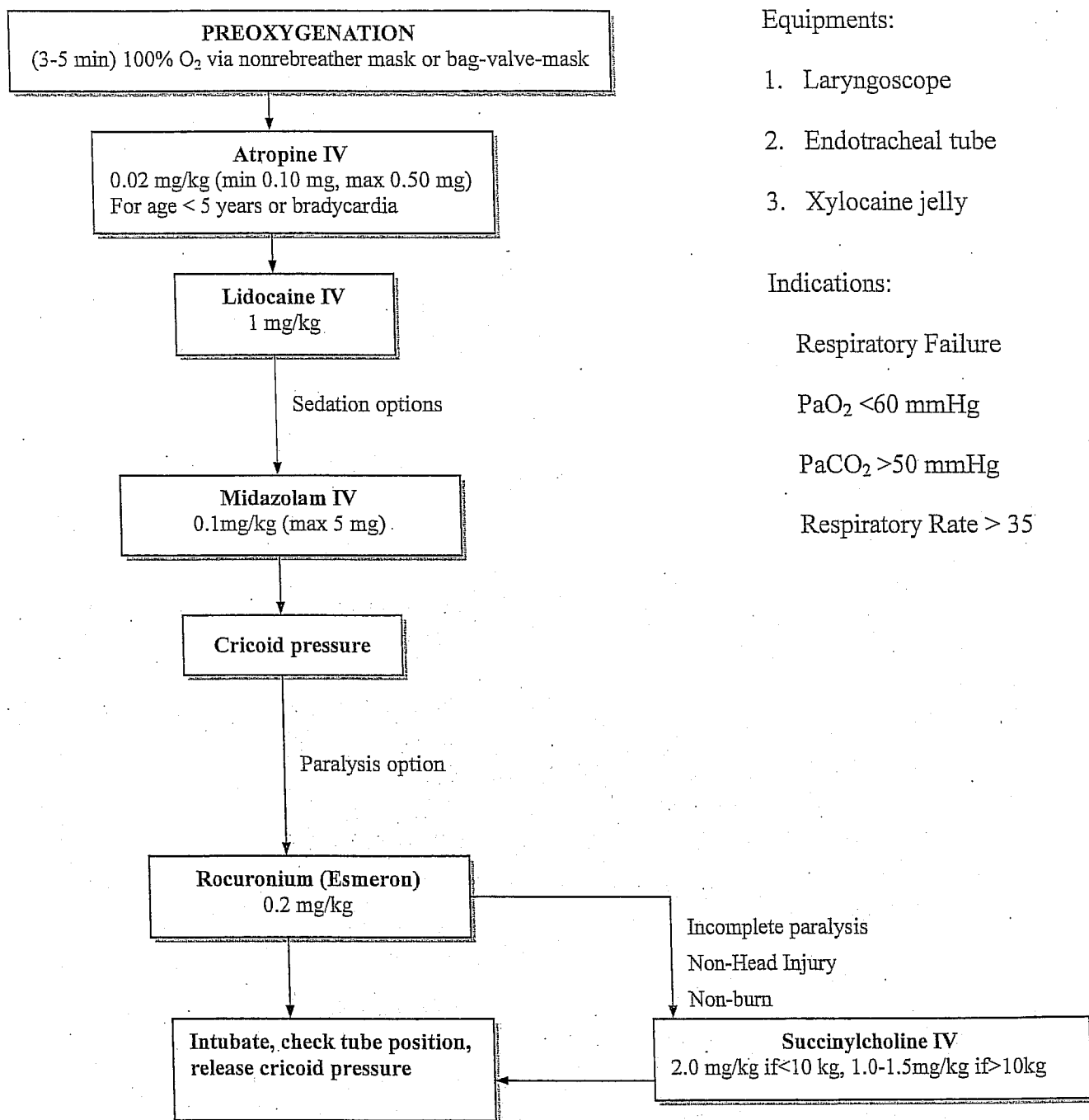


Rapid- Sequence Intubation

1. Pediatric Endotracheal Intubation (≤ 14 y/o)



Equipments:

1. Laryngoscope
2. Endotracheal tube
3. Xylocaine jelly

Indications:

- Respiratory Failure
- PaO₂ < 60 mmHg
- PaCO₂ > 50 mmHg
- Respiratory Rate > 35

* Tube size: $4 + \frac{\text{age}}{4}$

* Intubation depth (cm):
 $12 + \frac{\text{age}}{2}$ or 3cm

beyond vocal cord