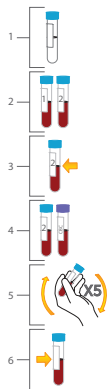


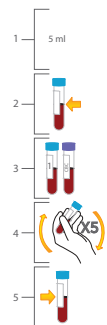
## VerifyNow Aspirin or P2Y12 Sample Collection Procedure



### Direct Venipuncture

Sample collection directly into vacuum collection tubes

1. Use 2 mL Greiner Bio-One partial-fill vacuette tubes with 3.2% sodium citrate (blue top). Greiner #454322.
2. Collect 2 tubes of whole blood using a 21 gauge or larger needle. First, collect a discard tube (at least 2 mL) making sure the discard tube does not contain any platelet inhibiting substance (e.g. EDTA). Butterfly (21 gauge) is OK to use.
3. Fill the second tube (sample tube) to the black line (1/2 tube). Do not under fill. Discard the first tube. Keep the second tube for testing.
4. If drawing blood for a CBC at the same time, fill the CBC tube last
5. Gently invert the tube at least 5 times to ensure complete mixing of the contents. Samples with evidence of clotting should not be used.
6. Label the tube with the patient ID, date and time it was drawn. Do not refrigerate.



### Indwelling Catheter

1. Discard the first 5 mL from an indwelling catheter to clear the line. Ensure the catheter is free of clots.
2. Immediately transfer blood to a 2 mL Greiner Bio-One partial-fill vacuette tube with 3.2% sodium citrate (blue top). Greiner #454322. Fill to the black line (1/2 tube). Do not under fill.
3. If drawing blood for a CBC at the same time, fill the CBC tube last
4. Gently invert the tube at least 5 times to ensure complete mixing of the contents. Samples with evidence of clotting should not be used.
5. Label the tube with the patient ID, date and time it was drawn. Do not refrigerate.

VerifyNow Test	Medication(s) Tested	Dose Given	Suggested Test Timing	Sample Incubation (Minutes)	Run Time (Minutes)
P2Y12	Clopidogrel (Plavix®)	75 mg	7 days on maintenance <sup>1</sup>	10	~3
		300 mg	8 hours post bolus <sup>2</sup>		
		600 mg	6 hours post bolus <sup>3</sup>		
	Ticlopidine (Ticlid®)	250 mg	2 hours post does <sup>4</sup>		
		250 mg (bid)	21 days (steady state) <sup>4</sup>		
	Prasugrel (Effient®)	5 mg	5 days on maintenance <sup>5</sup>		
		10 mg	5 days on maintenance <sup>5</sup>		
		60 mg	45 minutes post bolus		
Aspirin	Aspirin	81 - 325 mg	2 hours post dose	30	~5

### Common error codes related to Attention 24 or 28

- Platelet count less than 119,000
- HCT < 33%
- Recent IIb/IIIa drug use
- Improper sample collection

For more details, see the VerifyNow Test package insert.

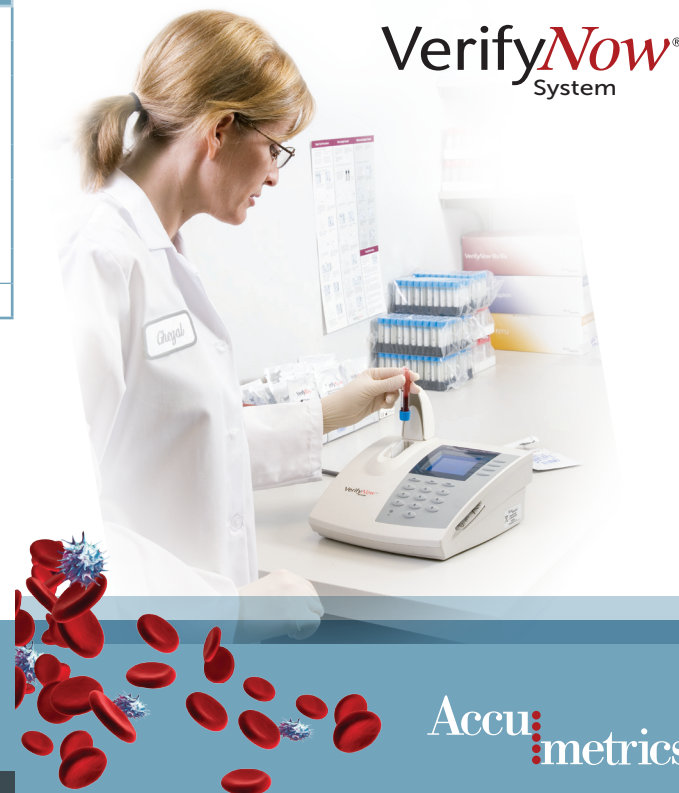
**1** Plavix (clopidogrel bisulfate) tablets Prescribing Information. Bristol-Myers Squibb/Sanofi Pharmaceuticals Partnership. 3/2010 Update. **2** Price, MJ et al. Am J Cardiol 2006;98:681-684. **3** Hochholzer W. et al. Circulation. 2005;111:2560-2564. **4** Ticlid (ticlopidine hydrochloride) tablets Prescribing Information. Roche Laboratories Inc. Revised 12/2005. **5** Effient (prasugrel) tablets Prescribing Information. Daiichi Sankyo, Inc. and Eli Lilly and Company. July 10, 2009. **6** VerifyNow IIb/IIIa Test Package Insert. 14320.K. 2009-06-10.

Accu:  
metrics®

The Accumetrics logo and VerifyNow are registered trademarks of Accumetrics, Inc., ©2012 Accumetrics, Inc.

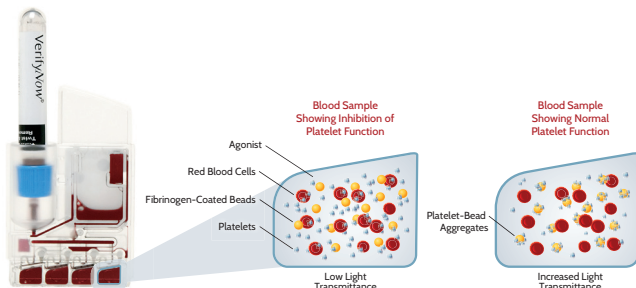
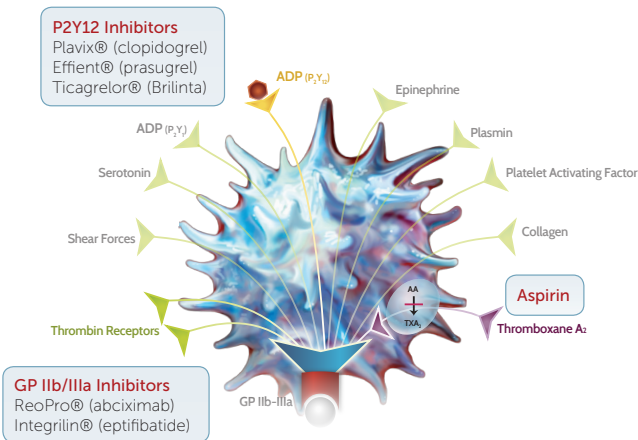
3985 Sorrento Valley Boulevard  
San Diego, California USA 92121  
Toll Free: 800.643.1640  
support@accumetrics.com  
[www.accumetrics.com](http://www.accumetrics.com)

PN:148039.D 3/30/12



Accu:  
metrics®

## How It Works: Activates Specific Drug Receptor Sites



## VerifyNow P2Y12 Results

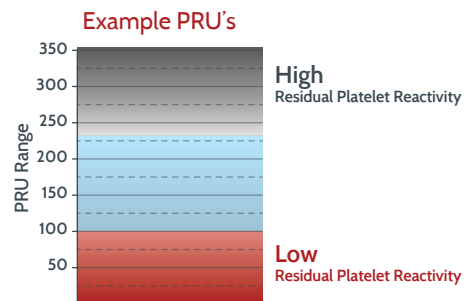
To Order this Test:

### VerifyNow P2Y12 Test:

Platelet response to P2Y12 inhibitors (e.g. clopidogrel (Plavix), prasugrel (Effient) and ticlopidine (Ticlid)).

### PRU (P2Y12 Reaction Units)

- Post-drug reference range of 18-435
- ADP induced aggregation - extent of platelet aggregation in the presence of P2Y12 inhibitors
- Residual Platelet Reactivity (RPR) of ADP P2Y12 receptor



## VerifyNow Aspirin Results

To Order this Test:

### VerifyNow Aspirin Test:

Platelet response to aspirin

### ARU (Aspirin Reaction Units)

- Arachidonic acid induced aggregation
- Reference range: 620-672 ARU (pre-drug administration)
- Measurement range: 350-700 ARU

### Result Interpretation:

- Recommended cut-off: 550 ARU

